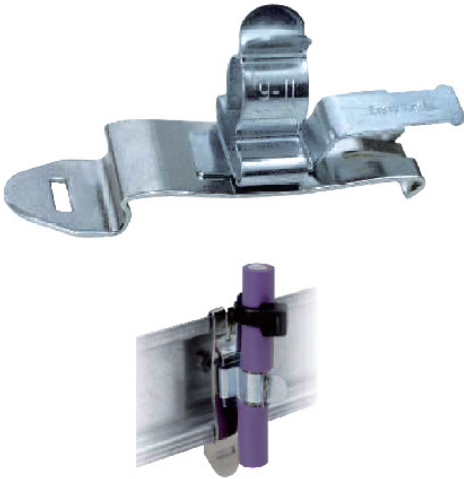


## SFZ/SKL EMC shield clamps



Material: spring steel zinc-plated

SF/SFZ-foot Spring steel

The shield clamps SFZ/SKL range are used for shielding single cables in combination with strain relief. Simple to use and effective shielding of cables.

Cables are secured with a cable tie. Strain relief in accordance with VDE standards is achieved.

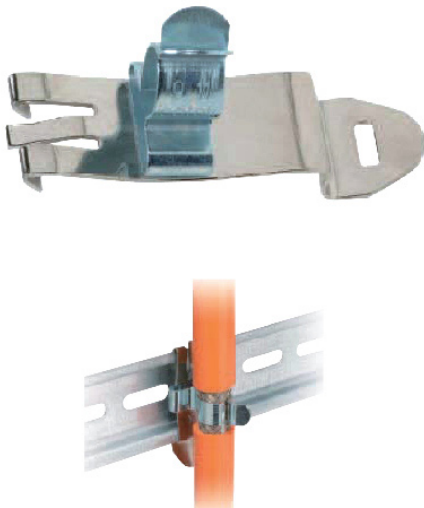
For assembly on 35 mm DIN rails.

Advantages:

- Simple and tool-free assembly cost effective solution
- Strain relief of the cable with shielding in a single device.
- Optimum contact permanent spring pressure and continuous spring pressure for cable shield layer.
- Cable shielding, no need to adjust the spring load.

Model No.	Order number	Protective diameter	Minimum order quantity
SFZ/SKL 3-5	36855	3.0-5.0mm	10
SFZ/SKL 6-8	36860	6.0-8.0mm	10
SFZ/SKL 9-11	36865	9.0-11.0mm	10

## SF/SKL EMC shield clamps



Material: spring steel zinc-plated

SF foot Spring steel

SKL range of protection clip is used to shield single cable.

Easy to use and effective shielding cable.

For assembly on 35 mm DIN rails.

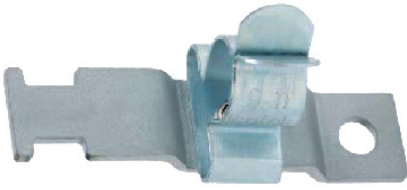
Advantages:

- Optimal contact of the cable shield simple and tool-free assembly.
- Permanent and continuous spring pressure on the cable shield - adjustment of the pressure is not necessary.
- Space saving by an optimized arrangement.
- Cost effective solution.

Model No.	Order number	Protective diameter	Minimum order quantity
SF/SKL 3-5	36244	3.0-5.0mm	10
SF/SKL 6-8	36245	6.0-8.0mm	10
SF/SKL 9-11	36246	9.0-11.0mm	10

## EMC series shield clamps

### LFZ/SKL EMC shield clamps



Material: spring steel zinc-plated

SKL shield clamps can be used for shielding single cables. The shield clamps enable an easy to use and reliable shielding of cables. Cables are secured with a cable tie. Strain relief in accordance with VDE standards is achieved.

Shield clamps are easily attached to mounting plates via screw.

Advantages:

- Comprehensive strain elimination.
- Optimum contact for cable shielding.
- Simple and tool-free assembly.
- Permanent and continuous pressure on the cable shield - no adjustment of the spring load required.
- Higher cost performance.

Model No.	Order number	Protective diameter	Applicable hole	Minimum order quantity
LFZ/SKL 3-5	36915	3.0-5.0mm	4.1mm	10
LFZ/SKL 6-8	36920	6.0-8.0mm	4.1mm	10
LFZ/SKL 9-11	36925	9.0-11.0mm	4.1mm	10

### LF/SKL EMC shield clamps



Material: SKL-clamp: spring steel, zinc-plated.

LF-foot: Steel, zinc-plated zinc-plated.

Fixing hole 4.2 mm for screw M4.

SKL shield clamps can be used for shielding single cables. The shield clamps enable an easy to use and a reliable shielding of cables.

Advantages:

- Optimum contact for cable shielding.
- Simple and tool-free assembly.
- Permanent and continuous spring load on the cable shield - no adjustment of the spring load required.
- Vibration-proof, maintenance free.
- High packing density because of an optimized arrangement.

Model No.	Order number	Protective diameter	Applicable hole	Minimum order quantity
LF/SKL 1.5-3	36251	1.5 - 3.0 mm	4.2 mm	10
LF/SKL 3-6	36253	3.0 - 6.0 mm	4.2 mm	10
LF/SKL 6-8	36255	6.0 - 8.0 mm	4.2 mm	10
LF/SKL 8-11	36256	8.0 - 11 mm	4.2 mm	10
LF/SKL 12-16	36257	12 - 16 mm	4.2 mm	10
LF/SKL 17-22	36258	17 - 22 mm	4.2 mm	10
LF/SKL 23-29	36259	23 - 29 mm	4.2 mm	10

### SPS/SKL EMC shield clamps



Material: SKL-clamp spring steel, zinc-plated SPS- foot: spring steel.

Advantages:

- Easy to install to DIN rail 35 mm.
- Simple and no alcohol assembly high density packaging.
- Anti-vibration, maintenance-free cable shielding layer of the best contact.

Model No.	Order number	Protective diameter	Minimum order quantity
SPS/SKL 1.5-3	36855	1.5-3.0mm	5
SPS/SKL 3-6	36860	3.0-6.0mm	5
SPS/SKL 6-8	36865	6.0-8.0mm	5

### PF/SKL EMC shield clamps for busbar



Specification: installed on 10x3mm bus.

Material: SKL-clamp spring steel, zinc-plated.

PFS-foot: Spring steel.

Bus: copper, tin plated, current load 140A.

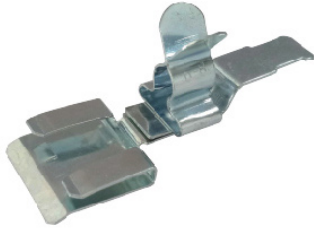
Advantages:

- Easy installation to bus 10x3mm simple and tool-free assembly.
- High packing density, anti-vibration, maintenance-free cable protective layer of the best contact point.

Model No.	Order number	Protective diameter	Minimum order quantity
PF/SKL 1.5-3	36251	1.5 - 3.0 mm	5
PF/SKL 3-6	36253	3.0 - 6.0 mm	5
PF/SKL 6-8	36255	6.0 - 8.0 mm	5
PF/SKL 8-11	36256	8.0 - 11 mm	5
PF/SKL 12-16	36257	12 - 16 mm	5
PF/SKL 17-22	36258	17 - 22 mm	5
PF/SKL 23-29	36259	23 - 29 mm	5

## EMC series shield clamps

### PFZ/SKL EMC shield clamps for busbar



Specification: to fix the cable by tightening 10x3mm busbar mounting cable strap.

Material: SKL-clamp spring steel, zinc-plated.

PFS-foot: Spring steel.

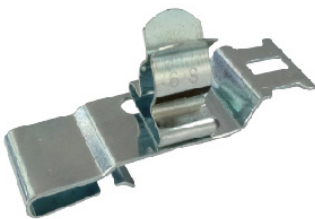
Bus: copper, tin plated, current load 140A.

Advantages:

- Comprehensive strain elimination.
- Easy installation to busbar 10x3mm simple and tool-free assembly, shockproof, maintenance-free cable shielding for optimal contact.

Model No.	Order number	Protective diameter	Minimum order quantity
PFZ/SKL 1.5-3	36244	1.5-3.0mm	5
PFZ/SKL 3-6	36245	3.0-6.0mm	5
PFZ/SKL 6-8	36246	6.0-8.0mm	5
PFZ/SKL 8-11		8.0-11.0mm	5

### PFZ/SKL EMC shield clamps



Specification: installed on 10x3mm bus.

Material: SKL-clamp spring steel, zinc-plated.

PF-foot: spring steel.

Bus: copper, tin plated, current load 140A.

Advantages:

- Easy to install to bus 10x3mm simple and toolless assembly with high packing density.
- Shock-proof, maintenance-free cable shielding layer for optimal contact.

Model No.	Order number	Protective diameter	Minimum order quantity
PFZ/SKL 1.5-3	36244	1.5-3.0mm	5
PFZ/SKL 3-6	36245	3.0-6.0mm	5
PFZ/SKL 6-8	36246	6.0-8.0mm	5
PFZ/SKL 8-11		8.0-11.0mm	5

### LFZ/SKL EMC shield clamps



Specifications: Screw mounting, 4.2mm hole fixing.

Material: SKL-clamp Spring steel, zinc-plated.

PF-foot: spring steel.

Advantages:

- Simple and tool-free assembly with high packing density.
- Shockproof, maintenance-free.
- Optimum contact for cable shielding.

Model No.	Order number	Protective diameter	Minimum order quantity
LFZ/SKL 1.5-3	36251	1.5 - 3.0 mm	5
LFZ/SKL 3-6	36253	3.0 - 6.0 mm	5
LFZ/SKL 6-8	36255	6.0 - 8.0 mm	5
LFZ/SKL 8-11	36256	8.0 - 11 mm	5
LFZ/SKL 12-16	36257	12 - 16 mm	5
LFZ/SKL 17-22	36258	17 - 22 mm	5
LFZ/SKL 23-29	36259	23 - 29 mm	5

### TW/RL EMC shield clamps



Specifications: install by capturing 10x3mm busbars.

Material: SKL-clamp Spring steel, zinc-plated

PF-foot: spring steel.

Busbar: copper, tinned, current load to 140A.

Advantages:

- Easy to install to busbar 10x3mm simplification and tool assembly.
- High packing density.
- The best contact for shockproof, maintenance-free cable shielding.

Model No.	Order number	Protective diameter	Minimum order quantity
TW/RL 1.5-3	36855	1.5-3.0mm	5
TW/RL 3-6	36860	3.0-6.0mm	5
TW/RL 6-8	36865	6.0-8.0mm	5

## EMC series shield clamps

### KLF EMC shield clamps



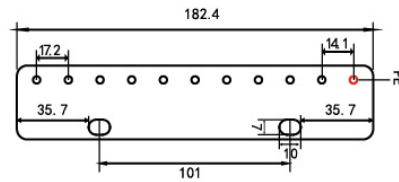
Material: clamp Spring steel, zinc-plated.

Bottom: stainless steel.

Advantages: optimized design for higher mounting density.

Customization: can be customized according to customer's required size.

#### Dimensioned drawing



Model No.	Order number	Number of earthing terminals	Minimum order quantity
KLF 10/182.4(3-6)	36855	10	5
KLF 10/182.4(6-8)	36860	10	5
KLF 10/182.4(8-11)	36865	10	5

### LF/SKL EMC shield clamps



Material: clamp Spring steel, zinc-plated.

Bottom: spring steel.

Fixed hole: 4.2mm.

Advantages: combined stress release.

The optimal contact area of the cable shield, no need for easy assembly of the tool, permanent and continuous elastic pressure on the cable shield, no need to adjust the pressure, shockproof, maintenance-free for 10x3mm busbar.

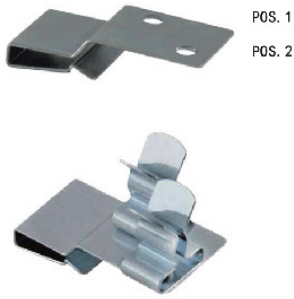
Customization: can be customized according to customer's required size.

Model No.	Order number	Protective diameter	Minimum order quantity
LF/SKL 1.5-3	36251	1.5 - 3.0 mm	5
LF/SKL 3-6	36253	3.0 - 6.0 mm	5
LF/SKL 6-8	36255	6.0 - 8.0 mm	5
LF/SKL 8-11	36256	8.0 - 11 mm	5
LF/SKL 12-16	36257	12 - 16 mm	5
LF/SKL 17-22	36258	17 - 22 mm	5
LF/SKL 23-29	36259	23 - 29 mm	5



# EMC series shield clamps

## TW2/RL EMC shield clamps



Material: clamp Spring steel, zinc-plated.

Bottom: spring steel.

Advantages: combined stress release.

The optimal contact area of the cable shield, no need for easy assembly of the tool, permanent and continuous elastic pressure on the cable shield, no need to adjust the pressure, shockproof, maintenance-free for 10x3mm busbar.

Customization: can be customized according to customer's required size.

Model No.	Order number	Wire diameter POS.1	Wire diameter POS.2	Minimum order quantity
TW2/RL 1.5-3	36251	1.5 - 3.0 mm	1.5 - 3.0 mm	5
TW2/RL 3-6	36253	3.0 - 6.0 mm	3.0 - 6.0 mm	5
TW2/RL 6-8	36255	6.0 - 8.0 mm	6.0 - 8.0 mm	5
TSC2/RL 0306	36256	1.5 - 3.0 mm	3.0 - 6.0 mm	5
TSC2/SKL 0308	36257	1.5 - 3.0 mm	6.0 - 8.0 mm	5
TSC2/SKL 0603	36258	3.0 - 6.0 mm	1.5 - 3.0 mm	5
TSC2/SKL 0608	36259	3.0 - 6.0 mm	6.0 - 8.0 mm	5
TSC2/SKL 0803	36259	6.0 - 8.0 mm	1.5 - 3.0 mm	5
TSC2/SKL 0806	36259	6.0 - 8.0 mm	3.0 - 6.0 mm	5

## KLF EMC shield clamps



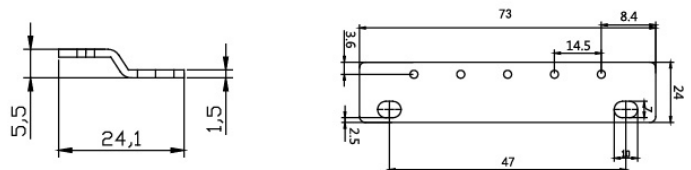
Material: clamp Spring steel, zinc-plated.

Bottom: stainless steel.

Advantages: optimized design for higher mounting density.

Customization: can be customized according to customer's required size.

### Dimensioned drawing



Model No.	Number of earthing terminals	Order number	Minimum order quantity
KLF 5/73(3-6)	5	36855	5
KLF 5/73(6-8)	5	36860	5
KLF 5/73(8-11)	5	36865	5

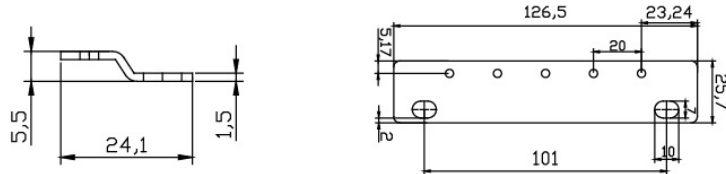
## EMC series shield clamps

### KLF EMC shield clamps



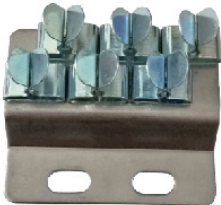
Material: clamp Spring steel, zinc-plated.  
 Bottom: stainless steel.  
 Advantages: optimized design for higher mounting density.  
 Customization: can be customized according to customer's required size.

#### Dimensioned drawing



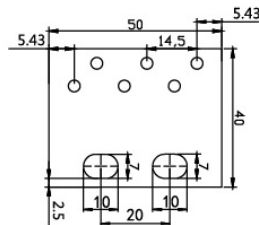
Model No.	Number of earthing terminals	Order number	Minimum order quantity
KLF 5/126.5(3-6)	5	36855	5
KLF 5/126.5(6-8)	5	36860	5
KLF 5/126.5(8-11)	5	36865	5

### KLF EMC shield clamps



Material: clamp Spring steel, zinc-plated.  
 Bottom: stainless steel.  
 Advantages: optimized design for higher mounting density.  
 Customization: can be customized according to customer's required size.

#### Dimensioned drawing



Model No.	Number of earthing terminals	Order number	Minimum order quantity
KLF 5/50(3-6)	6	36855	5
KLF 5/50(6-8)	6	36860	5
KLF 5/50(8-11)	6	36865	5



The electromagnetic compatibility of electrical equipment and devices has become extremely important, and we offer our customers different sizes of products.

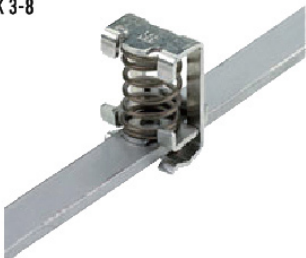
Material: Steel

LK 2X2-6



Length	24 mm
Width	15 mm
Height	18 mm
Net weight	9.9 g
Minimum cable diameter	2 mm
Maximum cable diameter	6 mm

LK 3-8



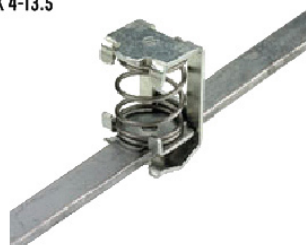
Length	26 mm
Width	13 mm
Height	18 mm
Net weight	9 g
Minimum cable diameter	3 mm
Maximum cable diameter	8 mm

LK 3-8 FM4



Length	50 mm
Width	14.5 mm
Height	26 mm
Net weight	17.5 g
Minimum cable diameter	3 mm
Maximum cable diameter	8 mm

LK 4-13.5



Length	24 mm
Width	15 mm
Height	18 mm
Net weight	15.5 g
Minimum cable diameter	4 mm
Maximum cable diameter	13.5 mm

LK 4-13.5 FM4



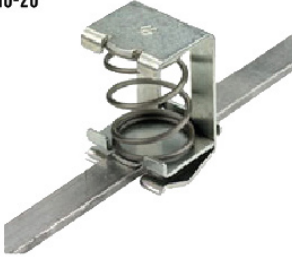
Length	50.5 mm
Width	20.5 mm
Height	31.5 mm
Net weight	21.941 g
Minimum cable diameter	4 mm
Maximum cable diameter	13.5 mm

## LK series clamping yoke

The electromagnetic compatibility of electrical equipment and devices has become extremely important, and we offer our customers different sizes of products.

Material: Steel

LK 10-20



Length	40 mm
Width	25 mm
Height	26 mm
Net weight	29.848 g
Minimum cable diameter	10 mm
Maximum cable diameter	20 mm

LK 10-20 FM4



Length	50.5 mm
Width	25 mm
Height	40 mm
Minimum cable diameter	10 mm
Maximum cable diameter	20 mm

LK 15-32



Length	64 mm
Width	36 mm
Height	32 mm
Net weight	80.8 g
Minimum cable diameter	15 mm
Maximum cable diameter	32 mm

LK 15-32 FM4



Length	50.5 mm
Width	34.5 mm
Height	64 mm
Minimum cable diameter	15 mm
Maximum cable diameter	32 mm

