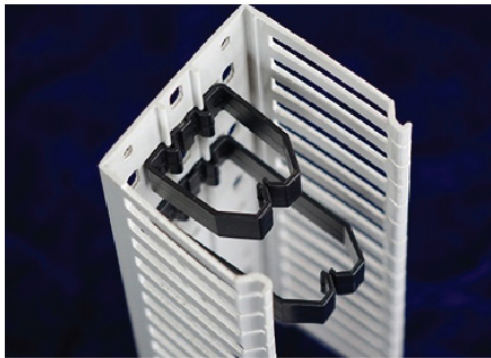
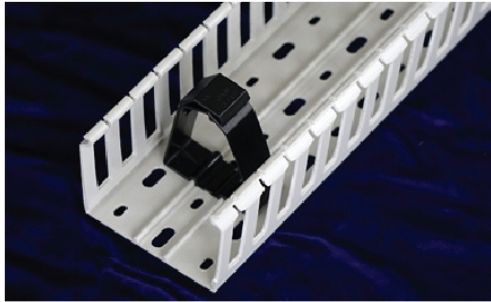
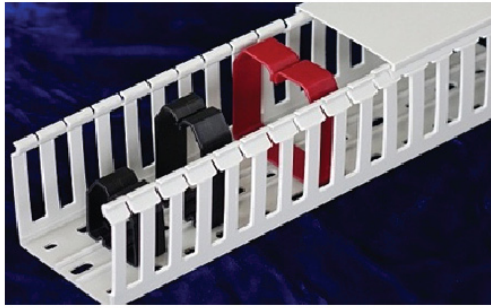


Low smoke halogen free wiring groove

IP68



Polycarbonate (PC) + Engineering Plastics (ABS)
The new low-smoke halogen-free reinforced trunking

Material:

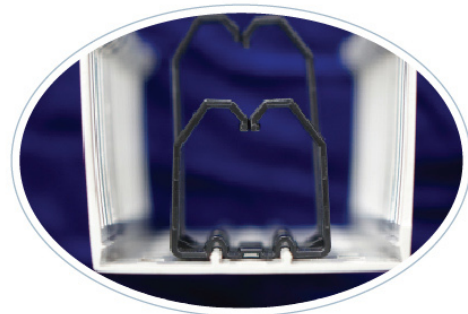
Polycarbonate (PC) + Engineering plastics (ABS), halogen-free, low-smoke environmentally friendly insulation materials, electrical and fire safety.

Flammability rating:

UL94 V-0 Non-flame spread product

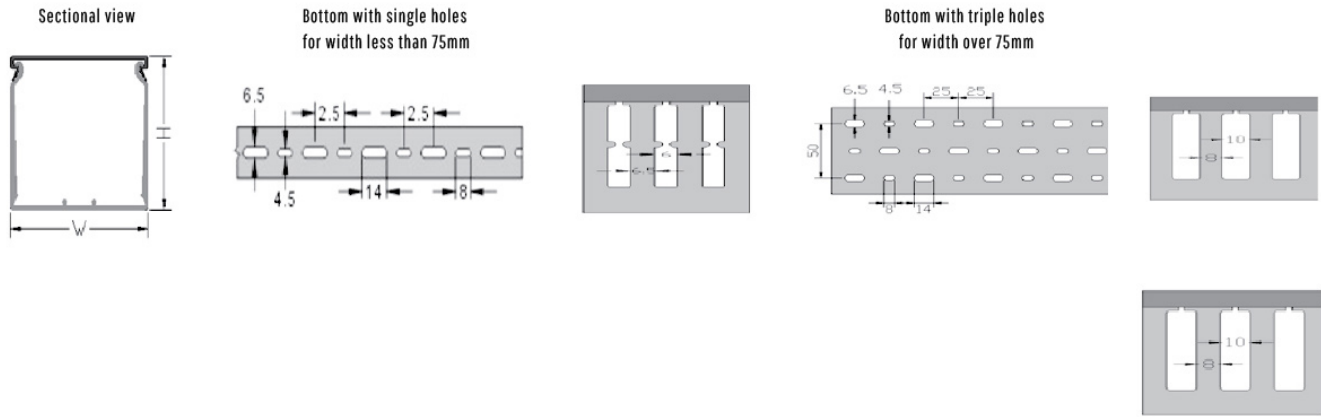
Construction:

1. Sides get thick, enhanced gradually from top to bottom, and improving sides strength and reliability.
2. Double layers are applied to the joint of cover and sides.
3. The indent bottom right angle is easy to be folded. While connecting with the vertical duct by cutting two end to form straight, flat outlets, fully protect the cable.
4. The floor is with rails, allowing to add traps to tighten wires and make it organized, neat and save space.



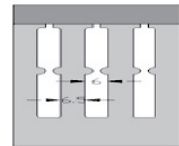
Low smoke halogen free wiring groove

IP68



L-UD/R series low-smoke halogen-free insulated wiring trough (reinforced type)

Model	Specification		Slot width mm	Sliver width mm	Wires to be Contained	Package meter
	Height(mm)	Width(mm)				
L-UD/R 25/25	25	25	10	10	10-25pcs	100
L-UD/R 37.5/37.5	37.5	37.5	10	10	60-70pcs	100
L-UD/R 50/25	50	25	10	10	20-30pcs	100
L-UD/R 50/37.5		37.5	10	10	20-35pcs	80
L-UD/R 50/50		50	10	10	80-90pcs	80
L-UD/R 50/75		75	10	10	180-200pcs	48
L-UD/R 50/100		100	10	10	220-250pcs	48
L-UD/R 75/25	75	25	10	10	50-55pcs	60
L-UD/R 75/37.5		37.5	10	10	110-115pcs	60
L-UD/R 75/50		50	10	10	180-200pcs	48
L-UD/R 75/75		75	10	10	200-240pcs	36
L-UD/R 75/100		100	10	10	260-320pcs	24



L-VD/R series low-smoke halogen-free insulated wiring trough (reinforced type)

Model	Specification		Slot width mm	Sliver width mm	Wires to be Contained	Package meter
	Height(mm)	Width(mm)				
L-VD/R 25/25	25	25	6	6.5	10-25pcs	100
L-VD/R 37.5/37.5	37.5	37.5	6	6.5	60-70pcs	100
L-VD/R 50/25	50	25	6	6.5	20-30pcs	100
L-VD/R 50/37.5		37.5	6	6.5	20-35pcs	80
L-VD/R 50/50		50	6	6.5	80-90pcs	80
L-VD/R 50/75		75	6	6.5	180-200pcs	48
L-VD/R 50/100		100	6	6.5	220-250PCS	48
L-VD/R 75/25	75	25	6	6.5	50-55pcs	60
L-VD/R 75/37.5		37.5	6	6.5	110-115pcs	60
L-VD/R 75/50		50	6	6.5	180-200pcs	48
L-VD/R 75/75		75	6	6.5	200-240pcs	36
L-VD/R 75/100		100	6	6.5	260-320pcs	24

LK type Flexible trunking

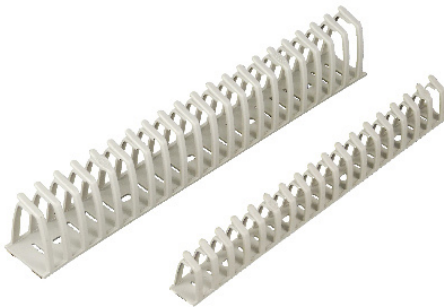
IP66



Flexible ducts self-adhesive

Material: polypropylene

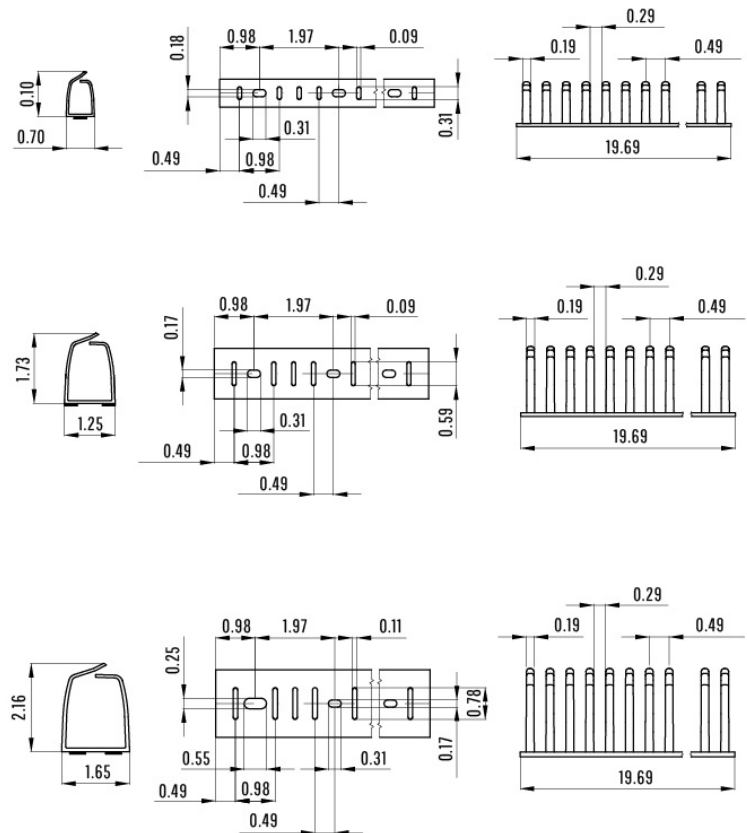
Color: gray RAL 7030



LK-FLEX Duct is a unique product offering from LINKWELL, that is a flexible, resilient and efficient harnessing solution to your wiring needs. For wiring to cabinet doors, from control panels and for electronic equipment. For that part of the cable run that leans against the side of the control cabinet.

- In view of the flexibility of the material individual wires can easily be added, or removed from total wires within the duct.
- Since Dinosaur has no cover it can accommodate cable in restricted space applications, and also effectively removes the need for cable ties.
- It can be used in extreme operating conditions (high temperature resistance up to 176 °F) and has excellent resistance to radiation if exposed to a nuclear environment.
- LK-FLEX withstands mechanical stress when installed (i.e. earthquake, falling equipment) while in the event of the fire does not emit corrosive, nor toxic gases, and smoke development is minimal.
- The duct can be cut to desired length using scissors or knife. When applying the LK-FLEX with adhesive tape, it is necessary to make sure that the surface is perfectly clean and dry.

Dimensional drawing



Each length is 19.7 inches (about 500mm)

Model	Nominal size	Lengths per carton
LK 25AG	0.5	0.7524
LK 35AG	1.00	1.3824
LK 45AG	1.38	1.7514



Description:

Manufactured with high quality rigid PVC, ROHS compliant, low smoke

Flammability rating:

UL94V-0 flammability class, good self-extinguishing, good insulation properties.

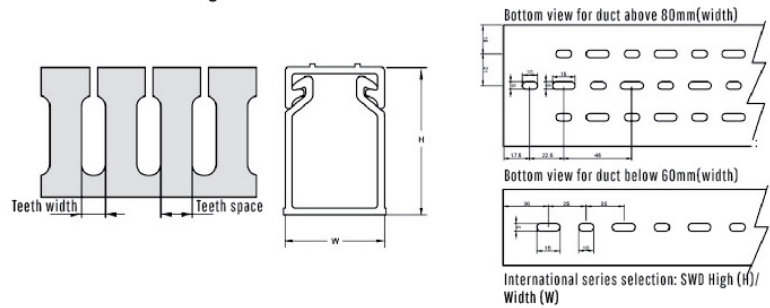
Construction:

1. Consist of base and cover, Easy and firm snap-on assembly, smooth joining for a better finish.
2. With aligned slot, Smooth corners and edges will not damage or disfigure wires.
3. Variable sizes and multi type side holes, easily for installation and wiring digrame.
4. Special mark line design on the cover can allow a quick tag of relevant components.

Color: grey (White, blue, black, etc. can be customized)

Temperature: -20°C ~ 85°C

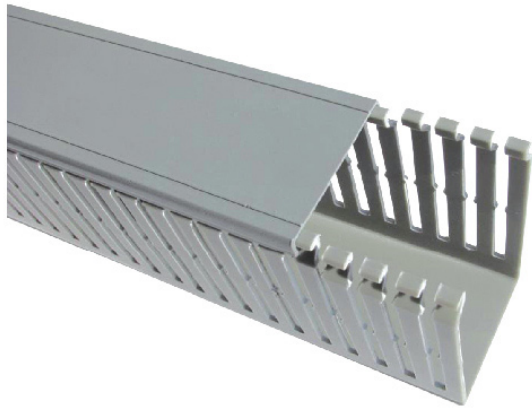
Dimensional drawing



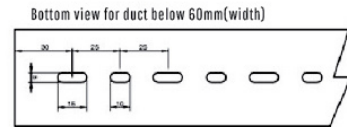
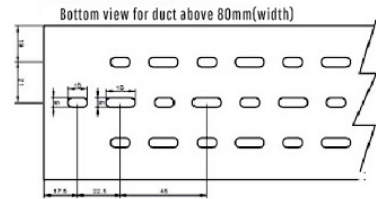
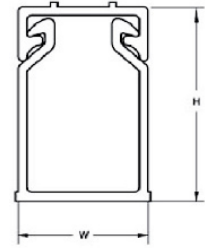
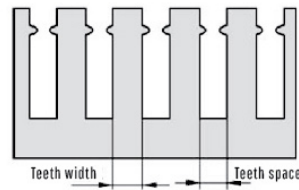
Wide slot/finger	Dimemnsion		Teeth space-Teeth width(mm)			Package
	Height(mm)	Width (mm)	6-8	8-10	10-10	
Model No.						meter
LD 50 25	50	25	•			100
LD 50 35		35	•			100
LD 50 45		45	•			80
LD 50 50		50	•			80
LD 50 60		60	•			64
LD 50 80		80	•			48
LD 60 40	60	40		•		64
LD 60 60		60		•		48
LD 60 80		80		•		36
LD 65 33	65	33		•		80
LD 65 45		45		•		80
LD 65 65		65		•		48
LD 80 25	80	25		•		60
LD 80 35		35		•		60
LD 80 40		40		•		48
LD 80 45		45		•		48
LD 80 50		50		•		48
LD 80 60		60		•		36
LD 80 80		80		•		36
LD 80 100		100		•		24
LD 80 120	120		•		24	
LD 100 35	100	35			•	48
LD 100 40		40			•	48
LD 100 50		50			•	48
LD 100 60		60			•	36
LD 100 80		80			•	24
LD 100 100		100			•	24
LD 100 120		120			•	24
LD 100 140	130	140			•	24
LD 130 100		100			•	24

LFD series Insulated wiring groove

IP66



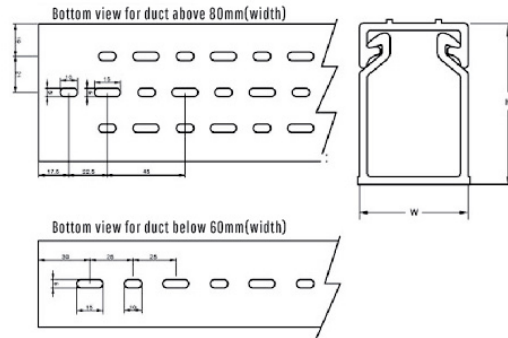
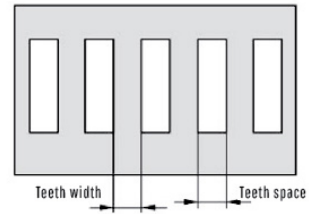
Dimensional drawing



International series selection: SWD High (H)/ Width(W)/F
(Teeth width-Teeth space)

Wide slot/finger	Dimension		Teeth space-Teeth width(mm)			Package
	Height(mm)	Width (mm)	6-6	6-8	10-10	
Model No.						meter
LFD 50 25	50	25	•		•	100
LFD 50 35		35	•		•	100
LFD 50 45		45	•		•	80
LFD 50 50		50	•		•	80
LFD 50 60		60	•		•	64
LFD 50 80		80	•		•	48
LFD 80 25		80	25		•	
LFD 80 35	35			•		60
LFD 80 40	40			•		48
LFD 80 45	45			•		48
LFD 80 50	50			•		48
LFD 80 60	60			•		36
LFD 80 80	80			•		36
LFD 80 100	100			•		24
LFD 80 120	120			•		24

Dimensional drawing



International series selection: SWD High (H)/ Width (W)/FS

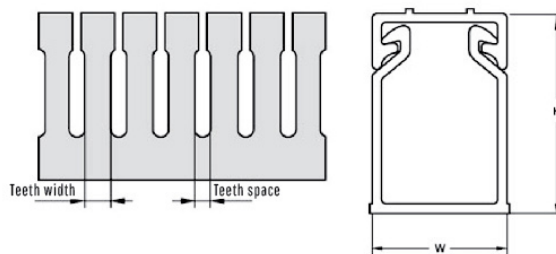
Wide slot/finger	Dimension		Teeth space-Teeth width(mm)			Package
	Height(mm)	Width (mm)	6-6	6-8	10-10	
Model No.						meter
KFD 60 40	60	40	•			64
KFD 60 60		60	•			48
KFD 60 80		80	•			36
KFD 100 30	100	35			•	48
KFD 100 40		40			•	48
KFD 100 50		50			•	48
KFD 100 60		60			•	36
KFD 100 80		80			•	24
KFD 100 100		100			•	24
KFD 100 120		120			•	24
KFD 100 140		140			•	24
KFD 150 100	150	100			•	16

KD series Insulated wiring groove

IP66



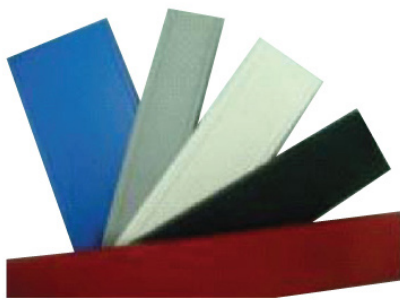
Dimensional drawing



Wide slot/finger Model No.	Dimension		Teeth space-Teeth width(mm)			Package meter
	Height(mm)	W(mm)	4-6	6-6	6-8	
KD 25 25	25	25	•			100
KD 30 20	30	20	•			100
KD 30 35		35	•			100
KD 30 30		30	•			100
KD 30 35		35	•			100
KD 35 35	35	35	•			100
KD 40 25	40	25	•			100
KD 40 40		40	•			80
KD 40 60		60	•			60
KD 50 25	50	25	•			100
KD 50 35		35	•			100
KD 50 45		45	•			80
KD 50 50		50	•			80
KD 50 60		60	•			64
KD 50 80		80	•			48
KD 60 40	60	40	•			64
KD 60 60		60	•			48
KD 60 80		80	•			36
KD 65 33	65	33	•			80
KD 65 45		45	•			80
KD 65 65		65	•			48
KD 80 25	80	25	•		•	60
KD 80 35		35	•		•	60
KD 80 40		40	•		•	48
KD 80 45		45	•		•	48
KD 80 50		50	•		•	48
KD 80 60		60	•		•	36
KD 80 80		80	•		•	36
KD 80 100		100	•		•	24
KD 80 120	120	•		•	24	
KD 100 35	100	35		•		48
KD 100 40		40		•		48
KD 100 50		50		•		48
KD 100 60		60		•		36
KD 100 80		80		•		24
KD 100 100		100		•		24
KD 100 120		120		•		24

MKD series Insulated wiring groove

IP66



Cover



Round slim type

Wide slot/finger	Dimension		Package meter
	Height(mm)	Width (mm)	
Model No.			
MKD 25 25	25	25	100
MKD 30 20	30	20	100
MKD 30 35		35	100
MKD 30 30		30	100
MKD 30 35		35	100
MKD 35 35	35	35	100
MKD 40 25	40	25	100
MKD 40 40		40	80
MKD 40 60		60	60
MKD 50 25	50	25	100
MKD 50 35		35	100
MKD 50 45		45	80
MKD 50 50		50	80
MKD 50 60		60	64
MKD 50 80		80	48
MKD 60 40	60	40	64
MKD 60 60		60	48
MKD 60 80		80	36
MKD 65 33	65	33	80
MKD 65 45		45	80
MKD 65 65		65	48
MKD 80 25	80	25	60
MKD 80 35		35	60
MKD 80 40		40	48
MKD 80 45		45	48
MKD 80 50		50	48
MKD 80 60		60	36
MKD 80 80		80	36
MKD 80 100		100	24
MKD 80 120		120	24
MKD 100 35		100	35
MKD 100 40	40		48
MKD 100 50	50		48
MKD 100 60	60		36
MKD 100 80	80		24
MKD 100 100	100		24
MKD 100 120	120		24
MKD 100 140	140	24	
MKD 130 100	130	100	24
MKD 150 100	150	100	16

Cover

Model: KB-Width

Model No.	Model No.	Model No.	Model No.
KB-15	KB-35	KB-60	KB-120
KB-20	KB-40	KB-65	KB-140
KB-25	KB-45	KB-80	KB-535
KB-30	KB-50	KB-100	
KB-33	KB-55		

Round slim type

Material: NYLON66(Grey)

Wide slot/finger	Dimension		
	Width (mm)	Height(mm)	length (cm)
TYPE			
FD-20	20.4	14.4	50cm
FD-30	29	24.9	50cm
FD-40	39	36	50cm